

Quick Setup Guide



Quick Setup Guide

Contents

Overview	3
Pre-Requisite Installations	3
XPUIPC	4
FSUIPC	6
Adobe® Reader®	7
Pilot2ATC Installation	7
Pilot2ATC Configuration	7
Configuration Panel	7
Joystick Configuration	8
Aircraft Call Sign	8
Pilot2ATC Settings Checkboxes	9
Windows Settings	10
Language Setup	10
Microphone	10
Microphone Troubleshooting	10
Program Startup	12
Start The Trial	12
Purchase and Register Your Copy	13
Support	13

Quick Setup Guide

Overview

Pilot2ATC is a companion Windows® application for use with any flight simulator compatible with [FSUIPC](#) (FSX, Prepar3D®) or [XPUIPC](#) (X-Plane). More complete details about all the functions of Pilot2ATC can be found in the *User Guide*. This *Quick Setup Guide* is meant to give you the essential knowledge you'll need to get up and running fast.

Along with the flexibility of Pilot2ATC comes some level of complexity. This guide will allow you to get the basic installation and configuration of the program completed in a relatively short period of time with minimal frustration.

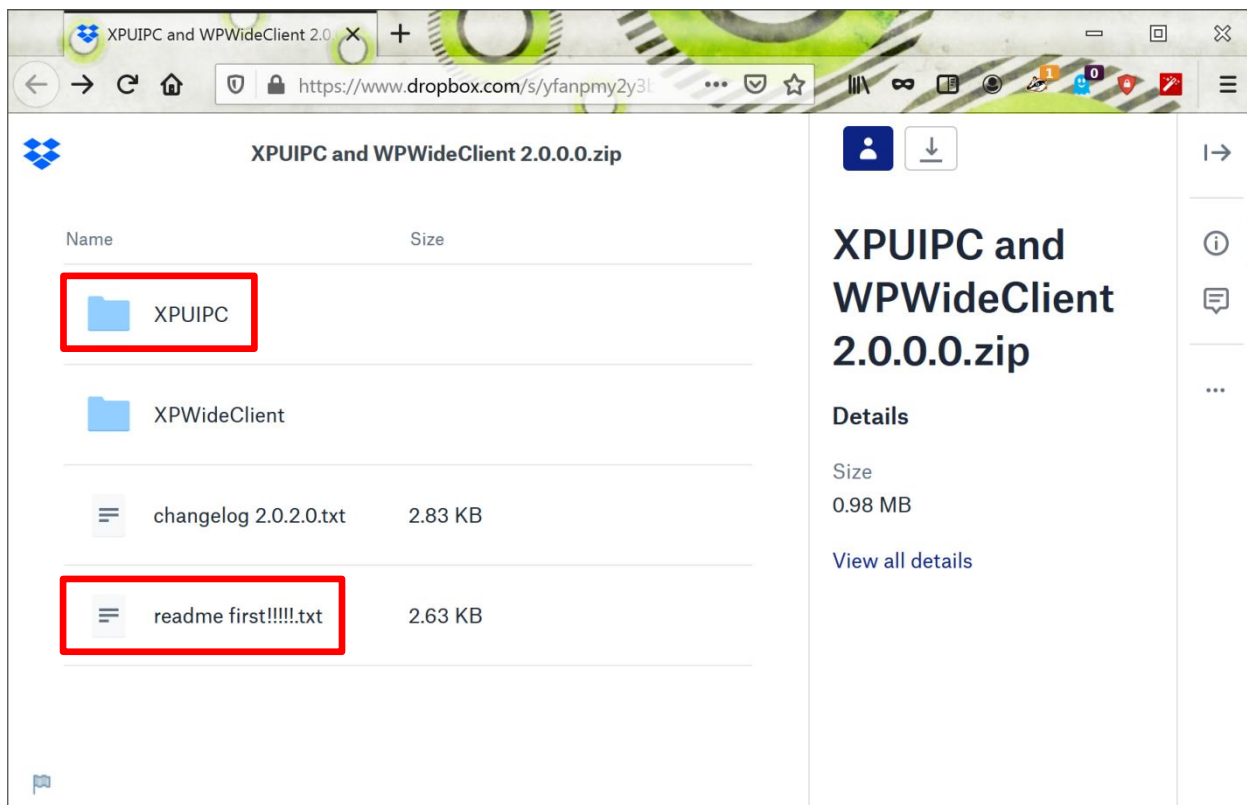
Pre-Requisite Installations

Before using Pilot2ATC, you will need to download and install the free version of either [FSUIPC](#) or [XPUIPC](#) and follow the instructions accompanying the downloaded files carefully.

COMMENT: If you have X-Plane **and** FSX or P3D, both XPUIPC and FSUIPC can be installed. Pilot2ATC will then work with any of these simulators you open/start. Of course, only one SIM at a time.

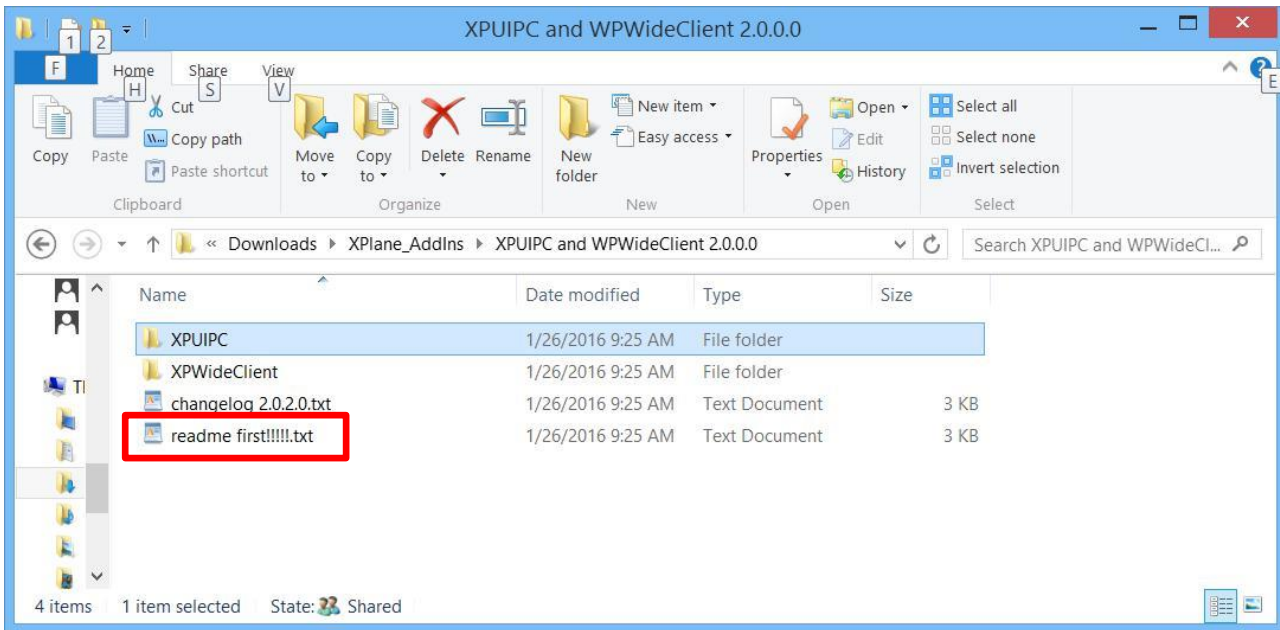
XPUIPC | *For X-Plane Only*

This is the connector software for X-Plane. It may be downloaded [here](#).



Quick Setup Guide

Download and extract the files from the .zip file.

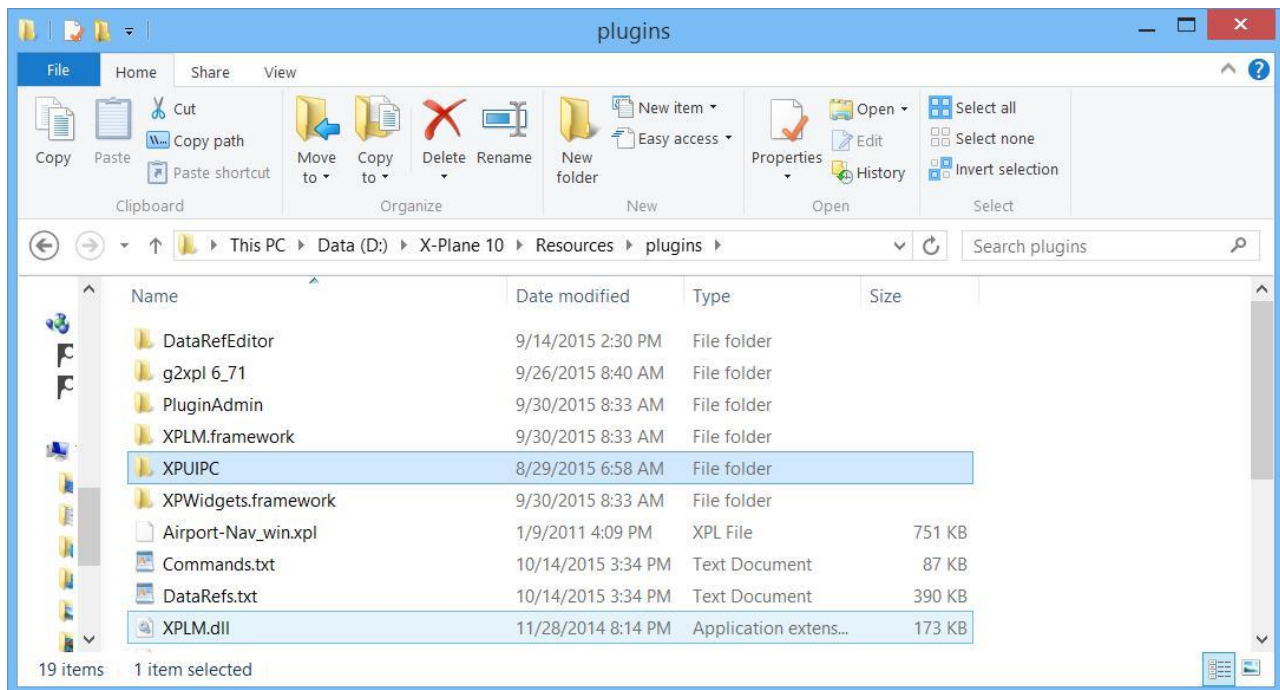


The unzipped folder should look like the illustration above.

IMPORTANT: The *readme first!!!!.txt* file contains full installation instructions. Read it very carefully.

For the quick version, select the XPUIPC folder highlighted above in blue and copy it to the X-Plane plug-ins folder.

COMMENT: In my case, that's located at D:\X-Plane 10\Resources\plugins.



Now, start X-Plane to see if the installation worked.

Quick Setup Guide

If it worked, you'll see XPUIPC in the plugins Drop-Down menu – like it does below. If not, re-read the installation instructions carefully to verify each step was followed correctly.



Clicking on that menu item will open a small dialog box – as illustrated below.



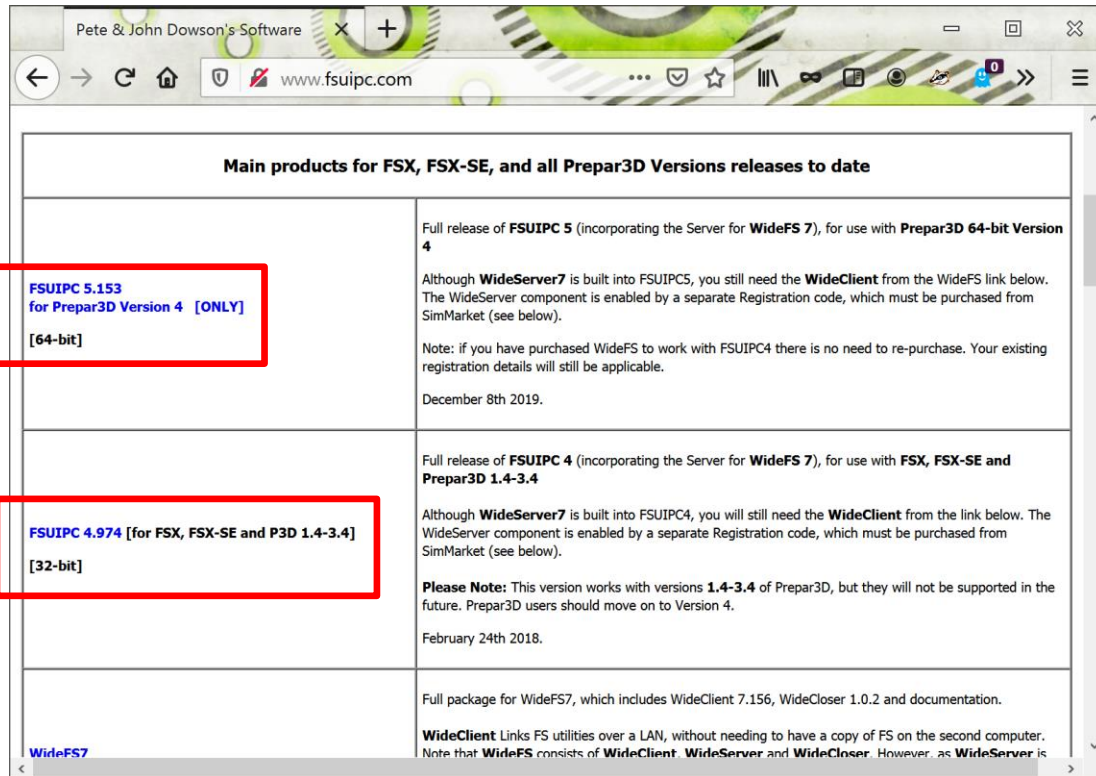
Quick Setup Guide

If you see the XPUIPC menu it's installed properly. There's no need for you to do anything else.

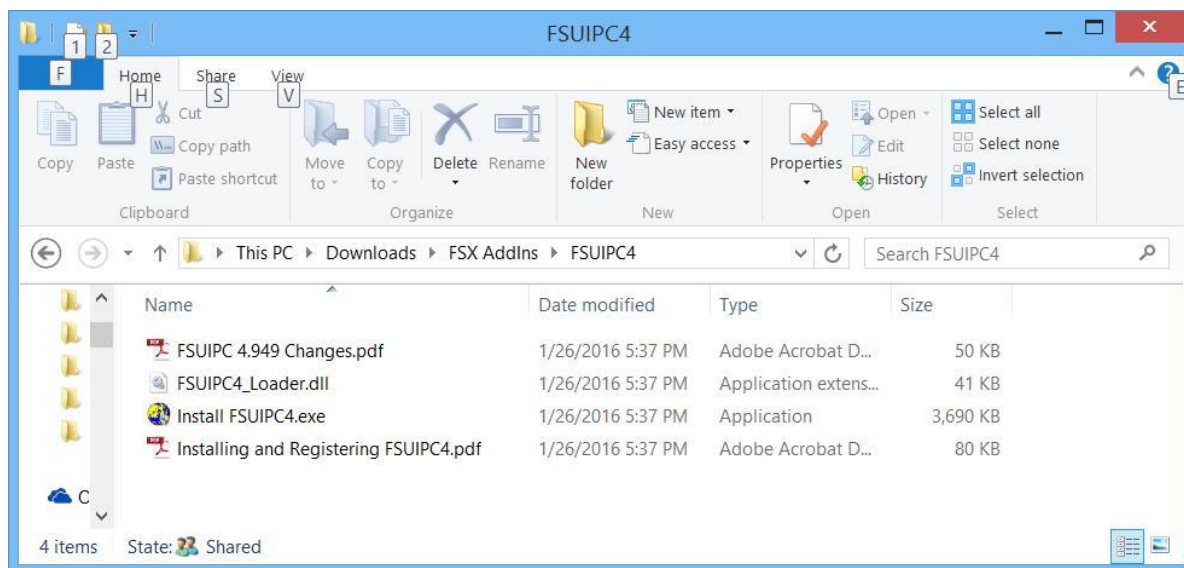
COMMENT: You may get a message when starting X-Plane about an invalid IP address. Click "OK" and continue. That message is related to the Wide Client and is **not** applicable for Pilot2ATC installations. If you want to do the complete install, open the readmefirst!!!!.txt file and follow the author's instructions.

FSUIPC | For FSX and P3D

This is the connector software for P3D and FSX. It can be downloaded [here](#). Pick the version based on your SIM.



After downloading FSUIPC4 4.xxxx, extract and follow the instructions.



Quick Setup Guide

Click on the *Install FSUIPC4.exe* program and follow the prompts. The .exe program will look for FSX and/or P3D on your system and take care of the installation for you. A caution, however, from the installation manual:

Before trying to install FSUIPC4, you must have actually run FSX at least once. If you've not yet run FSX, do so first. This is necessary because certain essential files are not created until you have run the program. The same applies to ESP and Prepar3D.

Adobe® Reader®

Adobe Reader must be installed on your computer. This program is necessary to display charts. If you have Windows 8 or higher, the charts will open in the default Document Reader instead of in the Pilot2ATC Charts window unless you install Adobe Reader for use on the desktop *and* make it the default program for opening .pdf files. **Set it as default PDF program in Windows as well as in Adobe Reader Options.**

Pilot2ATC Installation

Installing Pilot2ATC is as simple as double-clicking the setup file you downloaded with either the trial or purchased version of the program. Prompts will guide you through the installation process and allow you to install the program on virtually any local drive of your computer running the flight simulator.

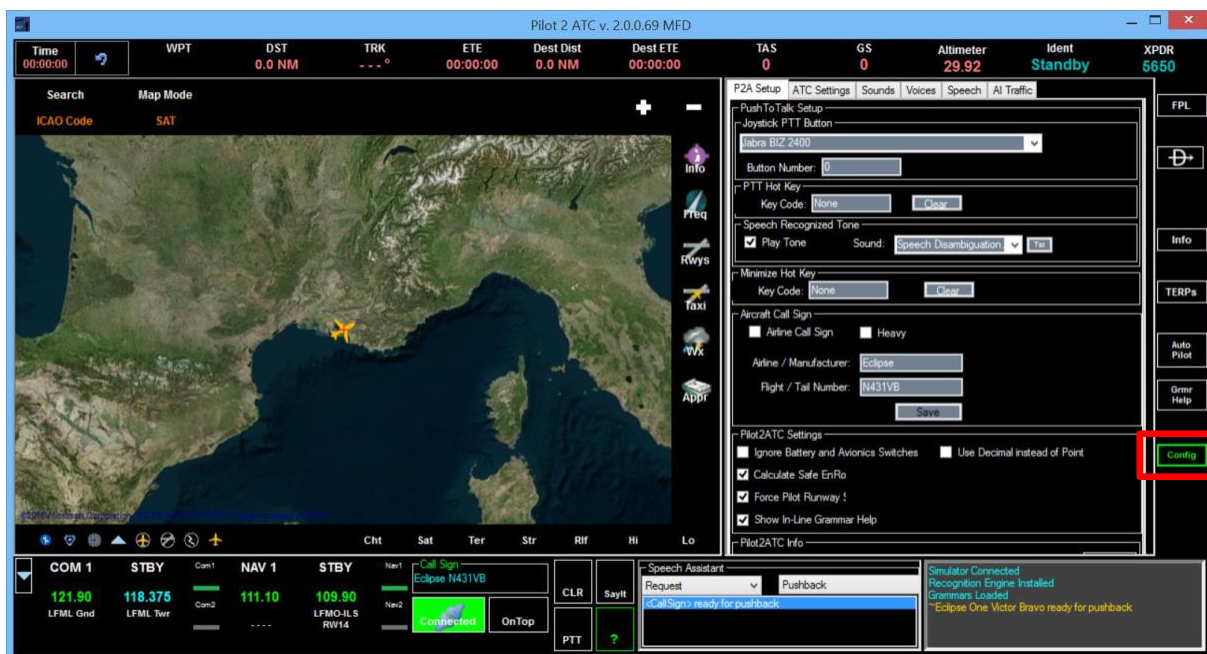
IMPORTANT: Pilot2ATC will **not** work if it's installed on a separate computer. Special instructions for network installation are provided in the User's Guide. This is not for new users.

P2A Configuration

Pilot2ATC has numerous options and settings. Most have default values you can set after you're up and running, though the settings noted below **MUST** be set before trying to run Pilot2ATC. Additionally, some Windows® settings **MUST** be made or Pilot2ATC **WILL NOT WORK**.

Configuration Panel

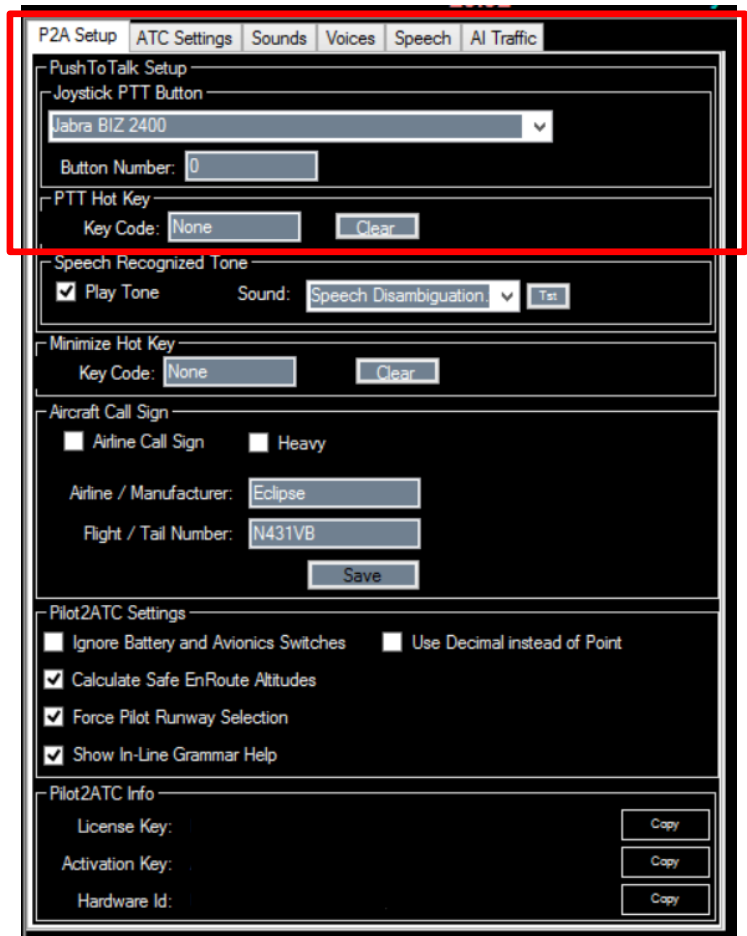
To access the configuration panel, click the Config button on the far right of the main window. It will open a panel containing all values the user must set.



Quick Setup Guide

Joystick Configuration

IMPORTANT NOTE: Before trying to use Pilot2ATC, you must configure the joystick button.



The screenshot shows the 'P2A Setup' window with several tabs: 'P2A Setup', 'ATC Settings', 'Sounds', 'Voices', 'Speech', and 'AI Traffic'. The 'P2A Setup' tab is active. A red rectangle highlights the 'PushToTalk Setup' section, which includes the 'Joystick PTT Button' settings. In this section, 'Jabra BIZ 2400' is selected in the drop-down menu, and '0' is entered in the 'Button Number' field. Below this, the 'PTT Hot Key' section shows 'Key Code' set to 'None' and a 'Clear' button. Further down, the 'Speech Recognized Tone' section has 'Play Tone' checked and 'Sound' set to 'Speech Disambiguation'. The 'Minimize Hot Key' section also shows 'Key Code' as 'None'. The 'Aircraft Call Sign' section is visible below, with 'Airline Call Sign' and 'Heavy' options, and fields for 'Airline / Manufacturer' (Eclipse) and 'Flight / Tail Number' (N431VB). The 'Pilot2ATC Settings' section includes checkboxes for 'Ignore Battery and Avionics Switches', 'Use Decimal instead of Point', 'Calculate Safe EnRoute Altitudes', 'Force Pilot Runway Selection', and 'Show In-Line Grammar Help'. The 'Pilot2ATC Info' section at the bottom shows fields for 'License Key', 'Activation Key', and 'Hardware Id', each with a 'Copy' button.

The setup screen has some of the key settings you need to configure before using Pilot2ATC and some optional ones.

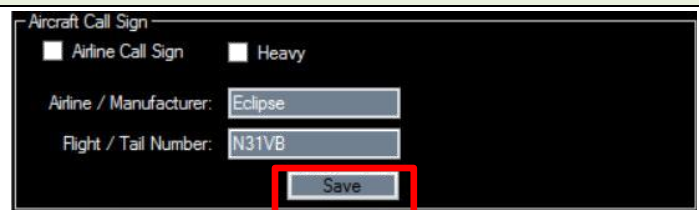
Joystick PTT Button – To set up the joystick, select your device (joystick or yoke) in the Drop-Down and then click the button you wish to use as the *PTT* (Push to Talk) button. The button number will automatically appear in the Button Number text box when you do this.

COMMENT: As luck would have it, I use the trigger button on my joystick. Its button number is 0. So, the first time I set this, I wasn't sure it was working. If this happens to you, just click another button, see that the number changes and then click the button you want again.

PTT Hot Key – This sets the hot key on the keyboard you can use as a PTT button. You don't have to set this, though some users find it helpful to be able to use an alternate means of clicking the PTT button. You might also use this to map a custom hardware button to a key and then set that key here to operate the PTT button. If you're doing this, you will likely not need any advice from me on how to set this up. Click the Clear button to disable the Hot Key.

Aircraft Call Sign

It's crucial the call sign you plan to use with Pilot2ATC is set up **BEFORE** attempting to use the voice recognition. The voice recognition **WILL NOT WORK** if you attempt to use a call sign other than the one set up here.



This screenshot shows the 'Aircraft Call Sign' section of the setup window. It includes checkboxes for 'Airline Call Sign' and 'Heavy'. Below these are text fields for 'Airline / Manufacturer' (containing 'Eclipse') and 'Flight / Tail Number' (containing 'N31VB'). A red rectangle highlights the 'Save' button at the bottom of this section.

Quick Setup Guide

Airline Call Sign – If you’re going to use an airline call sign like “Southwest 4653”, check this box. Otherwise, leave it unchecked. When you check the box, an Airline Lookup box will appear as in the screenshot to the right. Enter the airline code in the Code box and the correct call sign will be populated. Ex: BAW for British Airways, get Call Sign of SPEEDBIRD. **Note: There is a full list of airlines in the Taxi Mnt Window – Airlines tab.**

Heavy – If your call sign will include the term “heavy” – as in “American 2333 Heavy” – check this box.

Airline/Manufacturer – Enter the name of either the Airline (for commercial aircraft) or Manufacturer (for GA aircraft).

Flight/Tail Number – Enter either the flight number (for commercial airliners) or the tail number (for GA aircraft).

SAVE – Click the Save button to preserve your settings.

NOTE: The call sign in the Call Sign window on the main screen should change when you Save the call sign.

Pilot2ATC Settings Checkboxes

The check boxes in the Settings group let you select some common options.

Ignore Battery and Avionics Switches –

Pilot2ATC Radio and Nav functions won’t work unless you’re connected to the SIM. Further, you must, by default, have the Battery and Avionics switches turned on. In most aircraft, this isn’t an issue. However, you may think something is wrong with Pilot2ATC if you forget to turn them on. Some aircraft don’t have one or both of these switches. Checking this box will tell Pilot2ATC to ignore these switches. So, if you don’t have them in your aircraft – or – if you don’t want to get frustrated figuring out why Pilot2ATC radios won’t come on, then check this box.

IMPORTANT: Before trying to speak on the radio, you should:

- **Verify the Master Battery and Avionics switches are on;**
- **Verify you’re connected to the simulator;**
- **Verify your simulator radio is turned on; and,**
- **Verify the volume is turned up in Pilot2ATC.**

Calculate Safe Enroute Altitudes – Pilot2ATC can calculate minimum enroute altitudes for your flight plans. However, this does take some time. If you’re flying long distances at high altitude, there’s no value in this, so uncheck this box. If you’re flying at low altitudes, in mountainous terrain, check this box so you get this added safety check. When checked, Pilot2ATC will add the Minimum Enroute AGL altitude (set elsewhere) to the highest terrain feature for each leg of your route as the Minimum for that leg.

Show ATC Assignments – When checked, this option displays assigned Frequency, STAR and Approach in white letters below the COM area of the main screen. If you miss the frequency assigned by the controller, just glance down and it is there for you.

Show In-Line Grammar Help – This toggles on and off the display of the gold text and the *Say-It* function. If you don’t use it, unchecking this box will prevent the gold text from getting in your way.

Use Decimal Instead of Point – Checking this box will enable ATC’s spoken voices to use the word “decimal” (as in Europe and other parts of the world) instead of “point” (as in the USA). Check this box to hear “Decimal”.

Other options in this area are explained in the User’s Guide.

Quick Setup Guide

Windows Settings

There are a number of essential Windows settings that must be made BEFORE trying to use Pilot2ATC.

Language Setup

Because Pilot2ATC uses Speech Recognition, how your PC Culture is configured can affect operations. Every attempt has been made to have Pilot2ATC work in any environment, though not all environments have been tested.

Language Packs

Windows can be tailored to many cultures and languages.

NOTE: *If you have Windows 7, be aware that only Windows 7 **Ultimate** or **Enterprise** can install additional Language Packs.*

IMPORTANT: You **MUST** have the US English Language Pack installed on your computer. This is not optional.

Microphone

Don't even try to start Pilot2ATC without a Windows Recording device (Microphone) installed. It'll come up, but you won't be able to connect to the SIM without it and error messages will be generated. The microphone must be set as the Default Recording Device in Windows Sound Settings.

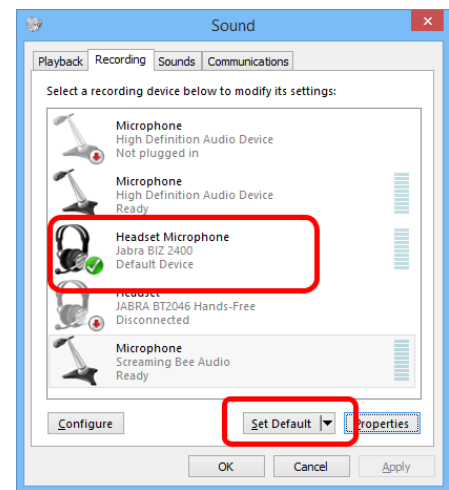
Microphone Troubleshooting

When setting up a microphone, a number of common problems are usually encountered. Here are a few of them:

- **Your Mic is not set up in Windows as the Default Input Device.**

The best way to check for this is in the Control Panel's Sound section. Review the settings within the Recording Tab and see that the microphone you're using says "Default Device" (or something similar) under its name.

DEVELOPER COMMENT: *On my PC, I show 3 active Recording Devices with my Headset Microphone as the Default Device and the other 2 say Ready. If your Mic does not say Default Device, select your Mic and click the Set Default button at the bottom. If Set Default is grayed out when your Mic is selected, it means your Mic is already set as the Default.*

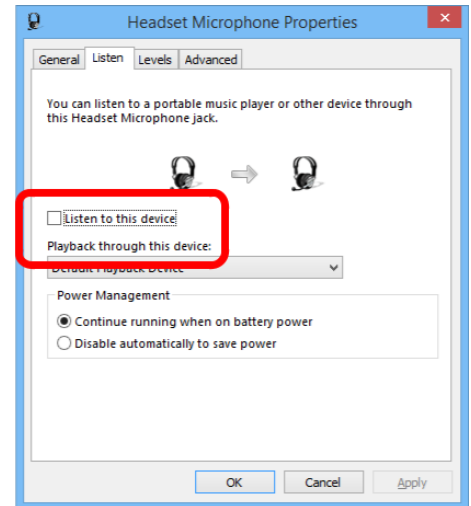


Quick Setup Guide

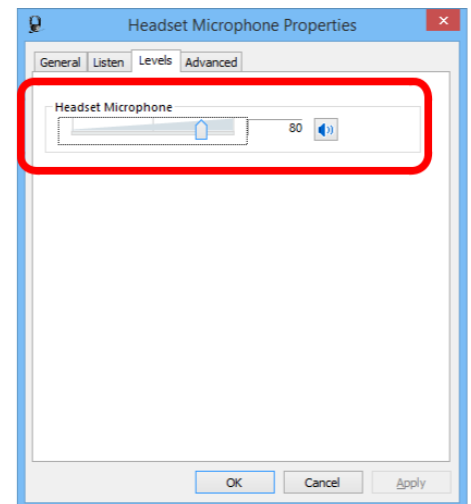
- **Your Mic is not working or is set too low.**

Check the Properties of your Mic in Windows by selecting it in the Sound Dialog and clicking the Properties Button.

- a. **On the Listen tab**, check the *Listen to this device* checkbox and then click Apply. Speak into the Mic. If you hear yourself clearly, all is okay with the Mic Volume, etc.



- b. If you didn't hear yourself – or if your voice was very weak – go to the **Levels** tab and check to see the volume is set high enough. If necessary, increase it until you can hear yourself clearly. If you can't hear yourself clearly at 100%, your Mic isn't getting the signal to your computer. Also, if your voice is distorted and very loud, you may need to turn the volume down until it is clear.



- **Your Mic has a volume control or mute switch.**

Some microphones have a volume control on them – *especially* when associated with a headset. If that microphone volume is turned down, your computer won't hear it and Pilot2ATC won't be able to hear you. Be sure it's turned up. Also, check that the Mute button/switch is not muting the physical microphone.

Quick Setup Guide

Program Startup

After you go through the Install process, navigate to the directory where you installed the program and click on P2A_200.exe. If you like, you can right-click P2A_200.exe and create a shortcut or pin it to your Task Bar or Start Menu for easy access in the future.

NOTE: Some PC setups require you to run Pilot2ATC as Administrator to allow security access to some PC resources or to have access to the internet for retrieving weather or maps. If so, right click the program in Windows Explorer and select "Run as Administrator". You can tell windows to always run it as administrator in the Properties box.

When you start Pilot2ATC for the first time, you should see a dialog box with four [4] buttons:

Button 1 | Start Trial – Select this one to begin the 10-day free trial. You shouldn't be asked for a license key.

Button 2 | Register – Click this button if you've purchased the product and are ready to register it. The license key is sent via email. Be sure to save it in a secure place.

Button 3 | Exit Application – Click this button to exit the program without proceeding further.

Button 4 | Copy – After registration, clicking this button will let you copy the Hardware Key to the clipboard.

NOTE: Our support team may need this to help you if you have registration problems.



Start the Trial

Once you click the *Start Trial* button, [1], your trial will be activated, and [2], your trial period will begin. Future startups won't give you that option. Instead, the days remaining in your trial will be shown at the top of the dialog box. To continue the trial, click "*Continue To Trial*" and you'll be taken to the main Pilot2ATC screen.

Each time Pilot2ATC is started during the 10-day trial period, you'll see this screen. Click "*Continue To Trial*" to access the program. Once your trial period is over, the message will change to one prompting you to purchase and register the product.

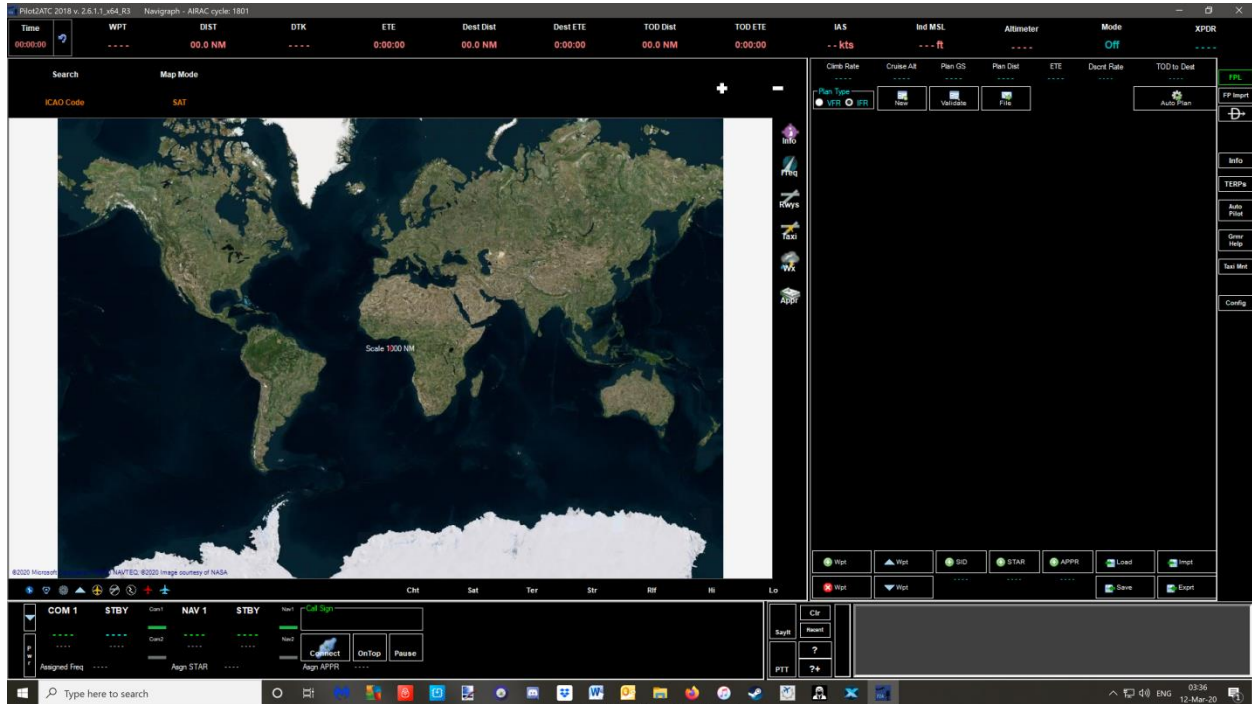


After clicking "*Continue To Trial*" or "*Register and Continue*", you'll see this screen. It'll be displayed (red box) while the database is loading. Be patient – the loading process can take 1-2 minutes.

When loading is complete, Pilot2ATC's main screen – **as seen on the following page** – will be displayed.



Quick Setup Guide



Purchase and Register Your Copy

We strongly recommend you use the generous 10-day trial period to get Pilot2ATC up and running **before** you purchase a license. That way, any unforeseen issues can be resolved and you'll know, with great certainty, it'll run in your environment.

Once you're ready, a full license may be purchased at the [Pilot2ATC](https://pilot2atc.com) website. After doing so, you'll receive an email containing your full license key. Be sure to save it in a secure place. The next time you start Pilot2ATC, click the *Register* button and enter it into the boxes provided. **You do not need to reinstall the program. The trial is the full program.**

HELPFUL TIP: You can copy the license key from the email and paste it in the first box to avoid having to type it in.

After registering, you won't see the licensing box again. Instead, you'll be taken directly to the main Pilot2ATC screen after starting the program.

Support

At Pilot2ATC, we're flight sim enthusiasts and we genuinely want you to enjoy our product as part of your immersive SIM experience. If you ever need assistance in getting something to work, please review the *User Guide* – it might be covered there. Before you get frustrated over something, though, drop us a line at admin@pilot2atc.com and we'll do our best to answer your question.

Thanks for flying with us! Enjoy!

